

DNA - Duroline North America Formulations



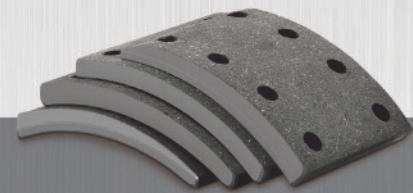
Standard Formulations

A step above your average standard formulation. For normal-duty operations these formulations are a very cost-effective solution for your long and short haul needs.



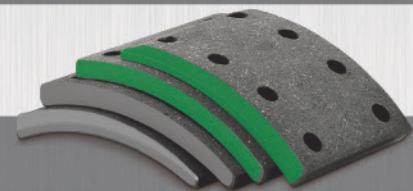
DNA-10 (Grey) – 20.000 lb. GAWR (165 AL)

Comparison: Abex (Federal Mogul) AN6166 – Marathon UB – Frasle AF550 – Stemco Horizon SP-20



DNA-11 (Green) – Rated for 23.000 lb. GAWR (165 AL)

Comparison: Abex (FedMog) AX6149 – Marathon FLOE – Frasle AF556 – Stemco Horizon SP-23



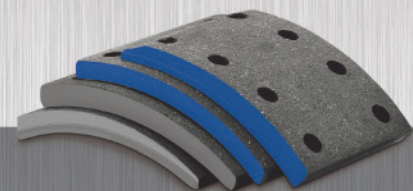
Premium Formulations

Designed to withstand the energy generated in more demanding applications and extend the life of your brakes. These formulations will offer great benefits, including longer brake replacement cycles, low noise levels and improved drum wear.



DNA-18 (Blue) – Rated for 20.000lbs per axle (165 AL)

Comparison: Abex (Fed-Mog) EN6008/EL6011 – Marathon HS20 – Meritor MA210/MA212 – FRASLE AF55 – Stemco Crest XL



DNA-38 (Red) – Rated for 23.000lbs per axle (165 AL)

Comparison: Abex (Fed-Mog) EX685/SDA6098 – Marathon HS – Meritor MA310/MA312 – Frasle AF557 – Stemco Vista HP



DNA-25 (Premium Severe) (Orange) – Rated for 25.000lbs per axle (165 AL)

Comparison: Abex (Fed-Mog) ED6028/EH6040 – Marathon TS – Meritor MA403 – Frasle AF560 – Stemco Vista HP1



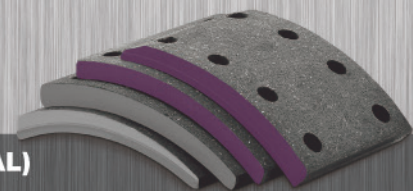
Heavy Duty and Transit

Maximum performance for heavy loads and stop-and-go operations. Outstanding for bus and refuse vocations. DNA-68 is very similar to the old Brake Pro formula CM/CMT22A1, that provided outstanding stopping power, quiet brake applications and extended lining and drum life.



DNA-68 (Purple) – Rated for 23.000lbs per axle (165 AL) and 26.000lbs (210 AL)

Comparison: Abex (Fed-Mog) 685/697 – Marathon KVT/MBST – Meritor R685/687 – Stemco Ultrapeak BRT



Extra Life

Designed to maximize brake replacement cycles. These friction materials are made with the highest manufacturing and technological processes the industry offers. DNA-88 is very similar to the old Brake Pro formula CM24/29, that provided stopping power, quiet brake applications and extended lining and drum life. This is the solution to transit applications with 28,700 GAWR applications and any heavy refuse application that desires the four basics to lower operation costs. Stopping power, Quiet brake applications, Extended lining life and Extended drum life.



DNA-88 (Gold) – Rated for 26.000lbs per axle (180 AL) and 29.000lbs (210 AL)

Comparison: Stemco Ultrapeak FT

